

THOMAS KERWIN

## BIOGRAPHY



Before founding bKL Architecture, Thomas Kerwin was a Partner at Skidmore, Owings & Merrill (SOM) in Chicago, where he began his architecture career in 1986. At SOM, Kerwin developed a special expertise in the management of highly complex, large-scale urban projects across the globe. He lived and worked in Manila, Philippines, during the mid-1990s. Kerwin has participated in the design and construction of significant commercial and civic buildings around

the world over the past two decades, including the Greenland Financial Center in Nanjing, China; Pearl River Tower in Guangzhou, China; White Magnolia Plaza and Chongming Island Master Plan in Shanghai, China; Rockwell Center in Manila, Philippines; and the Broadgate Development Exchange House in London, England. These projects have led to numerous awards and worldwide recognition in the industry.

Along with more than two decades of international experience, Kerwin is committed to civic endeavors and projects in the Midwest and at home in Chicago. Kerwin's tireless efforts as a member of the Chicago 2016 Committee and as the Managing Partner of SOM's Olympic team have earned him universal praise from the architectural community, city government, and business and civic leaders. His concern for the well being of urban and regional communities can be seen in his determination to positively shape their future.

Kerwin is a Fellow of the American Institute of Architects (AIA) and a past President of AIA Chicago. He is a member of the Board of Trustees of the Chicago Architecture Foundation and is on the Board of Overseers for the Illinois Institute of Technology College of Architecture. He is an active member of The Commercial Club of Chicago, The Economic Club of Chicago, Chicago Sister Cities International, The Chicago Council on Global Affairs, Urban Land Institute, Executives Club of Chicago, Landmarks Illinois, and Lambda Alpha International. Kerwin received a master's degree in business administration from the Kellogg School of Management at Northwestern University and a bachelor's degree in architecture from Ball State University, where he was presented the Distinguished Alumni Award in 2005.

## PROJECTS

**Thomas Kerwin, FAIA** has

dedicated his professional career to the management of projects that strengthen cities and the regions in which they exist. As an architect, Tom's approach is grounded in the profound link between the civic and corporate worlds. Advocating greater awareness of architecture's role in corporate responsibility, he has led community initiatives and committed significant time to pro-bono work. International speaking engagements, numerous publications and extensive awards are testaments to his commitment to architecture in the Midwest and abroad.

From 1986 to 2009, Tom worked in the Chicago office of Skidmore, Owings & Merrill LLP (SOM). As a Managing Partner, he yielded substantial opportunities for the growth of the firm, the education of young architects, and the advancement of his professional practice.

Throughout the process of driving large-scale, multi-faceted projects to completion, Tom has continually fostered client relationships and pushed for inventive problem-solving. He draws out the personal best of team members, effectively turning daunting tasks into opportunities for improvement. Tom applies the same efficiency and determination to spearheading civic initiatives, reaching audiences beyond the building profession.

**Shaping the Future of Asia**

Tom's interest in Asia commenced early in his career when he relocated to Manila, the Philippines, to manage the immense 10.8 million square foot Rockwell Center project. His appreciation for and commitment to Asian culture opened doors to new civic projects, such as Chongming Island, a master plan that re-positioned the district of Shanghai as a "green island" at the vanguard of ecological planning, and Pearl River Tower in Guangzhou, the region's first supertall tower to produce nearly as much energy as it consumes.

**Commitment to the Midwest**

A native of Indiana and a supporter of Midwestern interests, Tom developed a passion for investing in projects close to home. His work has focused on the revitalization of urban cites, such as the renovation of the five million square foot General Motors Renaissance Center in Detroit, Michigan. Delegating and organizing hundreds of people prior to construction—including the client, developer, city and community—resulted in one of the most complex, large-scale efforts orchestrated in the United States. With equal finesse, Tom has delivered notable, smaller-scale civic projects, including the Sioux City Art Center in Iowa. His management of the Lakefront Downtown Master Plan for Waukegan, previously one of the most prominent cities in Illinois, has put the city on track to becoming a destination once again.

**Advocating Civic Leadership**

Tom is an active member of many civic organizations in Chicago and abroad. His involvement in the Chicago China Sister Cities program has enabled him to promote dialogue and collaboration between the two great international cities of Chicago and Shanghai. He is an avid supporter of the Chicago Architecture Foundation and a member of the Foundations Board of Trustees.

Tom accompanied Mayor Daley as a business ambassador to Beijing, resulting in the opportunity to help lead the city's planning efforts for the 2016 Olympic bid. He served on the Chicago 2016 Committee and led efforts on behalf of SOM to design a physical plan that emphasized compactness, access to transit, and integration of Olympic venues into downtown and the lakefront. Tom's pro-bono planning work for the city, in coordination with various other business leaders, resulted in Chicago being selected to represent the U.S. in the international phase of the Olympic bid against the cities of Rio De Janeiro, Madrid and Tokyo.

In addition to committing time and guidance to the city, Tom has provided extensive leadership to the AIA. During his tenure as the 2005 President of the AIA Chicago Chapter, he ushered in fresh ideas and initiated change in the executive leadership. Tom's collective, far-reaching contributions make him a highly regarded practitioner and a valuable champion of the critical role of urban planning and architecture in today's society.



**Client:** Greenland Group

**Size:** 308,000 sm



Wang Da Gang © SBT



Sun Wei Zhong © SOM



Wang Da Gang © SOM



Sun Wei Zhong © SOM

## NANJING GREENLAND FINANCIAL CENTER

The Nanjing Greenland project is a multi-use complex comprising several buildings resting on two sites, Parcels A1 and A2. Parcel A1 contains a podium connecting two towers. The 450-meter tower consists of offices and hotels, and the 100-meter tower contains office space. Parcel A2 contains a 63-meter tower of offices with its own podium.

The shape and placement of the buildings are designed to echo the geometry of the existing roads and maximize exterior views of the city. The buildings' composition maintains the east to west view corridors along East Beijing Road and provides a visual link to the nearby historical drum and bell towers.

Landscaping is a significant part of the project. The buildings are set back from the street with several large landscaped public open spaces. South of Parcel A1, is a sunken garden that will connect to the future subway. There is also a roof garden at the top of the podium in Parcel A1 to reduce the heat island effect and offer views of the drum and bell towers. The 450 m high tower incorporates sky gardens that wind up the façade like a coiling dragon.



**Client:** Chicago 2016  
**Size:** City of Chicago



SOM, under the direction of the City of Chicago and Chicago 2016, participated in the development of the physical plan for Chicago's bid to host the 2016 Olympic and Paralympic Games. Coordinating with dozens of architects, planners, engineers and construction firms, SOM was a key contributor in the planning effort that resulted in Chicago being selected to represent the United States during the domestic phase of the bid into the international phase of the bid. Mr. Kerwin served on the Chicago 2016 Committee and led efforts on behalf of SOM.

The plan placed most venues within an easy walk of transit and close to both downtown Chicago and the lakefront. At the geographic center of the plan was the Olympic Village, which would have provided housing, training and support facilities for athletes. SOM developed conceptual planning for the Village that, following the Games, would have been transformed into a mixed-use, mixed-income community in an effort to revitalize the area and reconnect adjacent neighborhoods to the lakefront. Compactness, accessibility to transit and integration into both downtown and the lakefront were guiding principles of the plan.



COAST AT LAKESHORE EAST

**Client:** Magellan Development

**Size:** 671,000 sf



This glass tower was designed in the tradition of Chicago modernism, rising 47 stories above Wacker Drive to overlook Lakeshore East Park, the Chicago River and Lake Michigan. In addition to 515 residential units, the mixed-use tower contains retail and amenities. All parking is located below Wacker Drive, enhancing the pedestrian experience at street level.

A composition of light and translucency, Coast features unique, continuous balconies on the north and south façades. A distinctive design element, they also provide private outdoor space nearly

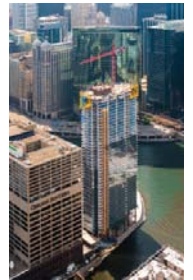
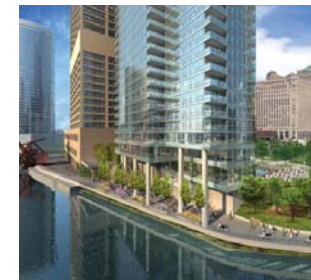
unmatched within the downtown Chicago rental market.

The visual character of Coast stands out among its neighbors along the Chicago River. Glass handrails on the balconies create a strong horizontal line juxtaposed with curtain walls of clear, translucent, fritted glass. The horizontally captured balconies coupled with the glass end-walls combine to create the appearance of a pure glass tower form on the skyline.



WOLF POINT WEST

**Client:** Hines  
**Size:** 571,000 sf



The 500-foot-tall Wolf Point West residential project rises 48 stories from the banks of the converging north, south and east branches of the Chicago River. From this vantage point, residents enjoy unparalleled views of the city, river and lakefront.

bKL served as the architect for the first tower to be constructed as part of the mixed-use master plan developed by Pelli Clarke Pelli Architects for Wolf Point in Chicago.

The project, which features approximately 510 rental units within 571,000 square feet, is composed of a series of layered planes that form the building's massing.

Its slender, elegant profile is anchored on the riverbank by lush landscaping; its parking garage is concealed below grade.

Inset balconies and a careful composition of vision and opaque glass—as well as three dimensional, horizontal bands of aluminum tubes—lend the façade texture and interest. The amenity levels and exterior deck provide enhanced interior and exterior living throughout all seasons.

Designed to achieve LEED Silver Certification, this project exemplifies bKL's commitment to reduced use of natural resources.



ROCKWELL CENTER

**Client:** Benpres Holdings Corporation

**Size:** 1,003,350 sm



Rockwell Center is a multi-use development consisting of office, hotel, conference center, retail and residential components. Composed of buildings at various different scales, the 10.8 million sf complex possesses a unique identity that differentiates it from any other district or development in the Philippines.

Each tower on the site assumes a highly individualized shape and demonstrates a unique and recognizable identity within the complex. Spacing between the towers is expansive, providing long views of the city in all directions. The second scale of buildings, composed of one- to eight-story low-rise structures, focuses on garden views, which rarely exist in Manila today. These low-rise structures create a spatial effect between the towers that establishes a human scale around the gardens and introduces variety into the visual experience of the project.

The Rockwell Center projects both an expression of the local culture and the quality of international design. This concept is also expressed in the landscape. Landscaping is generally a strong part of the visual experience in the country and even in urban areas, but today it is largely absent in metropolitan Manila. Gardens displaying an indigenous character with the use of woods and stones in deep earth tones and native species are interspersed throughout the Rockwell development.





PEARL RIVER TOWER

**Client:** China National Tobacco Corporation, Guangdong Company

**Size:** 214,000 sm



The 71-story Pearl River Tower epitomizes the supertall corporate headquarters building of tomorrow: an iconic, high-performance structure that is designed in such harmony with its environment that it potentially produces as much energy as it consumes.

From its form to its siting, every aspect of the 309-meter tower is designed to harvest wind and solar energy. Pearl River will face the prevailing winds and use them to relieve the structural burdens imposed by high-wind pressures. In short, wind forces are so well managed, they become “invisible braces” that help fortify the building.

Pearl River Tower’s sculpted body directs wind to a pair of openings at its mechanical floors. The traveling winds push turbines which generate energy for the building’s heating, ventilation and air conditioning systems.

The openings provide structural relief by allowing the wind to pass through the building instead of pressing against it. This design relieves pressure on the side facing the wind and reduces potentially damaging negative pressures on the backside of the building.

Energy consumption is reduced by maximizing natural daylighting, reducing solar gain in air conditioned spaces, retaining rainwater for gray-water usage and by utilizing solar gain for the building’s hot water supply. The office tower is chilled by a combination of stack venting, radiant panel cooling and chilled beams. Solar collectors integrated into the façades transform the sun’s energy to usable AC current.

Pearl River Tower represents the new benchmark in corporate office building design. Rather than a conventional design, upgraded with a checklist of environmentally-friendly add-ons, Pearl River is a new skyscraper for a new age.

## ANIMATION CULTURAL CITY



**Client:** China Central Newsreel & Documentary Film Animation Cultural City Limited

**Size:** 286,500 sm



People are at the center of design for this project. Workers and visitors alike will enjoy an environment that inspires and invigorates as the pleasantries of the buildings, plazas, spaces and landscape add to a more productive and efficient day. A major aspect of the design is the use of sunlight. A great amount of consideration has been put into both interior and exterior

spaces in order for all environments to be inviting and comfortable. The building orientation, size and façade detailing are used to optimize the amount of direct sunlight while allowing diffused light into office and retail spaces. These areas allow for a range of public and private gatherings which enrich business, the public and society as a whole.

# WHITE MAGNOLIA PLAZA

THOMAS KERWIN PROJECTS

WHITE MAGNOLIA PLAZA  
SHANGHAI, CHINA



**Client:** Shanghai Jingang North Bund Realty Co. Ltd.

**Size:** 397,000 sm

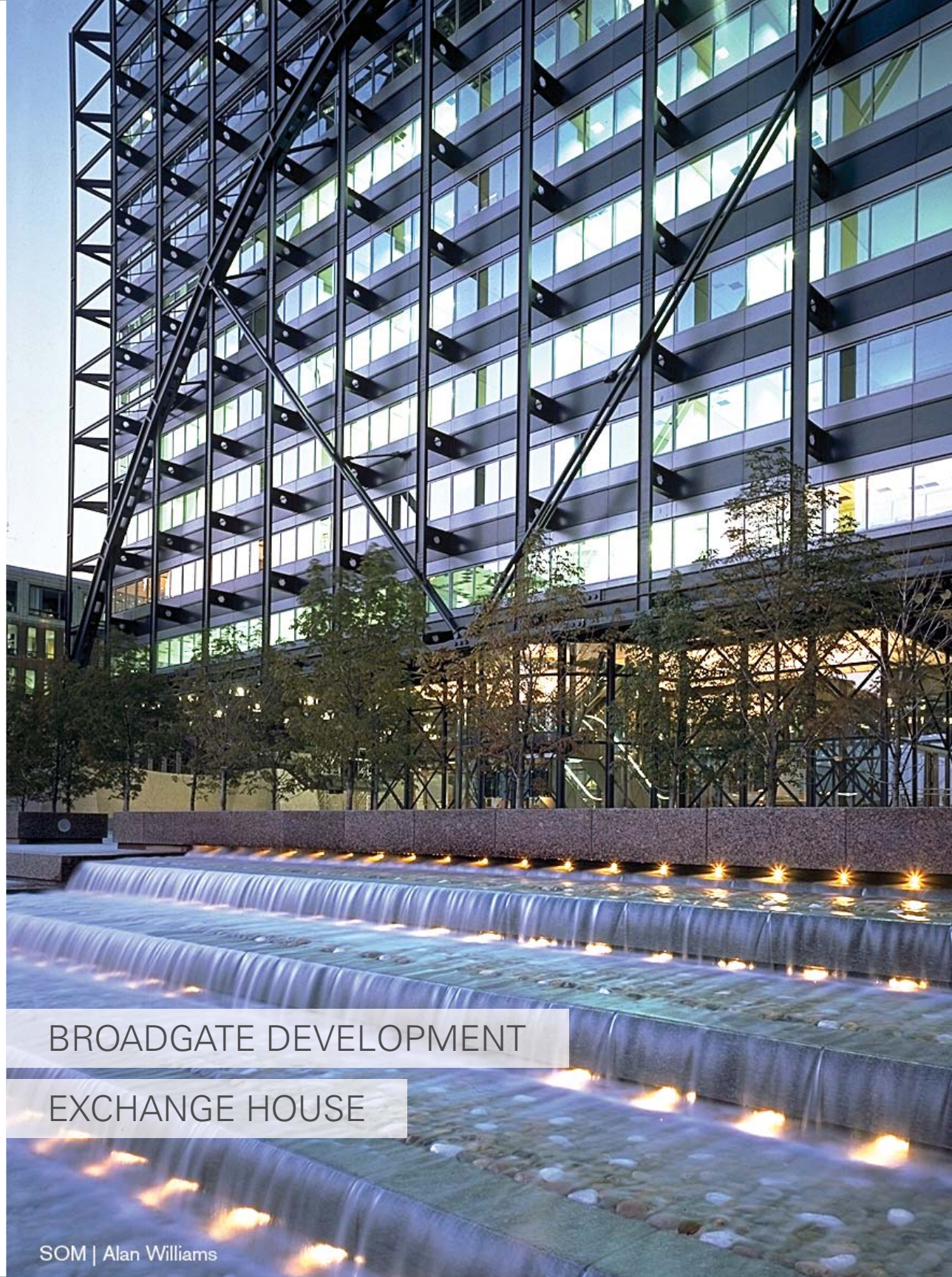


SOM took a highly organic approach to the design for White Magnolia Plaza, a final component of the Huangpu Riverfront Master Plan. North of the Bund neighborhood, along the Huangpu River directly across from Pudong's famous Oriental Pearl TV Tower, the site is a natural focal point. Passengers leaving Shanghai's main cruise terminal follow a path leading through White Magnolia Plaza on their way to the transit stop that takes them into downtown Shanghai.

While the initial plan called for five towers, SOM's final design simplified the program to three: a landmark 66-story office building and two smaller towers housing hotels. The buildings are located above a subterranean parking garage and an above-ground shopping center podium. Split into two wings, the site flanks the pedestrian pathway from the ship terminal to the transit stop.

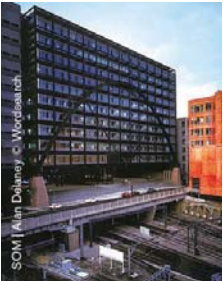
The shape of the site's landmark tower references the shape of a budding magnolia flower, with a smaller base-level floor plate that broadens as it ascends, and then narrows again towards the tower's luminescent crown. The pinnacle of White Magnolia's central tower visually connects the historic Bund District with the high-rise Pudong District across the river, balancing the city skyline. The two smaller crescent-shaped hotel towers complement the taller office tower, integrating the complex with the neighboring stepped structures.

On all three buildings, translucent sunshades generate a passive cooling system during the day and further articulate the silhouettes of the towers. At night, the illuminated sunshades enhance the towers' luminous presence.



**Client:** The British Land Company PLC

**Size:** 56,000 sm



Exchange Square is the heart of SOM's fourteen-building Broadgate Development in the City of London, and an integral part of a major development strategy intended to repair the urban fabric. Essentially an air-rights development, many of Broadgate's 29 acres stretch over the platforms and tracks of the Liverpool Street Station. Combining the development of new financial services, offices, and retail space with important new public squares, gardens, and public art, Broadgate is a thriving and sophisticated urban environment.

Exchange House, at the head of Exchange Square, is one of Broadgate's fourteen buildings. Located directly over existing British Rail train tracks, the ten-story office block is supported by a structural frame that spans the tracks in the manner of a bridge, with a parabolic arch at the center of the overall design. Exchange House is notable for the way in which a singular structural concept resulted in a functional and elegant architectural solution, and for the manner in which it responds to Britain's long tradition of iron, steel and glass structures, exemplified by the train sheds of the Liverpool Street Station.

BROADGATE DEVELOPMENT

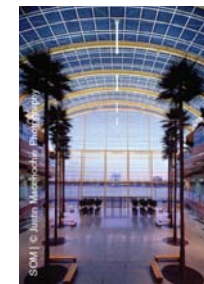
EXCHANGE HOUSE



GM RENAISSANCE CENTER

**Client:** Riverfront Holdings, Inc.

**Size:** 5,500,000 sf



SOM assisted Hines and General Motors as Master Architect/Engineer for the renovation of the Renaissance Center complex for GM. SOM's involvement in the project began in July of 1996 with the preparation of a Framework Plan to guide the development of the center. The Framework Plan was completed in November of 1996.

SOM continued to develop the project design, assessing existing conditions, evaluating various alternatives for the exterior roadway networks, developing alternatives for the relocation of the central heating and chilled water plant, and refining the design of major building elements such as the north entry, the Wintergarden, the hotel entry and lobby, the exterior wall of the podium element, and the organization of space within the podium.

As Master Architect/Engineer, SOM refined the design for the podium elements, prepared the construction documents for the shell and core portions of the podium, and oversaw and assisted in the work of other consultants working on various portions of the project. Concurrent with this effort, SOM developed a program for GM's ancillary facilities.



## GEMS WORLD ACADEMY—CHICAGO

**Client:** GEMS Americas, Inc.

**Size:** 378,000 sf



GEMS World Academy is a private K–12 school in Chicago’s Lakeshore East Community. The two-building vertical campus marries GEMS’ program with local requirements, creating a new model for a high-rise school in an arena of limited precedents. The use of state-of-the art technology enables students to collaborate with classrooms throughout the world, providing an international perspective on education.

The 82,000 square foot Lower School houses 660 students within 10 stories on a limited site. Juxtaposed against an adjacent park, the playful exterior is a modernist composition of interlacing colored panels and glass. The configuration responds to internal program elements while rationalizing the construction, allowing for fast-paced fabrication.

Organized to reduce travel times, the common areas are stacked centrally. Interior architecture is driven by flexibility, optimized floor area, connectivity, daylight and views. The design responds to the unique site constraints, provides a variety of spatial experiences, and makes strategic use of color and materials while maintaining a consistent approach to detailing.

The Lower School facility has been planned in conjunction with an Upper School that is to be constructed in a future phase. Distribution of grade levels and spaces between the two separate but proximate sites was determined during the master planning process. The two buildings, planned to serve a total of 2,100 students, maintain a unified approach to interior and exterior design, make provisions for internal drop offs to limit street traffic, and assist in stitching together the neighborhood by filling two vacant sites.

# THE SELBY TORONTO



THOMAS KERWIN PROJECTS

THE SELBY TORONTO  
TORONTO, CANADA

**Client:** Cityzen Development Group, Diamondcorp

**Size:** 495,000 sf



This 49-story residential tower in the heart of downtown Toronto overlooks the city and Lake Ontario. Its design incorporates a restored heritage mansion, which bKL complements in the brick of the tower.

With 556 residential units and five levels of below-grade parking, the building features 19,880 square feet of indoor and outdoor amenities as well as 556 bicycle parking spaces. The podium of the tower includes four duplex townhomes.

## 5TH AND BRAZOS



**Client:** Wanxiang America Real Estate Group, LLC,  
Magellan Development Group LLC

**Size:** 756,500 sf



5th & Brazos is a mixed use building in the heart of downtown Austin, a city celebrated as much for technology and innovation as for its distinctive local culture. The building massing and façade expression are designed to reflect the multiple programmatic elements contained within, including retail, 266 hotel rooms, 378 apartment units, and 5 levels of below grade parking. The façade is transparent and porous along the street to invite visitors, hotel guests and residents to partake in the amenities that are accessible to all.

The careful use of solid and void at the base of the building subtly acknowledges the activity taking place within. The color palette is fresh and contemporary, while referencing colors of local stone and wood. The design emphasizes a dynamic relationship between interior and exterior, with gathering spaces that open at street level. The 450 foot tower steps back from the podium, revealing an extensively landscaped roof deck with a pool and terrace bar that maximizes views of the city skyline and the river beyond. With a wide variety of outdoor experiences, the deck is a lush oasis year-round.





**Client:** Greenland Group

**Size:** 220,000 sm



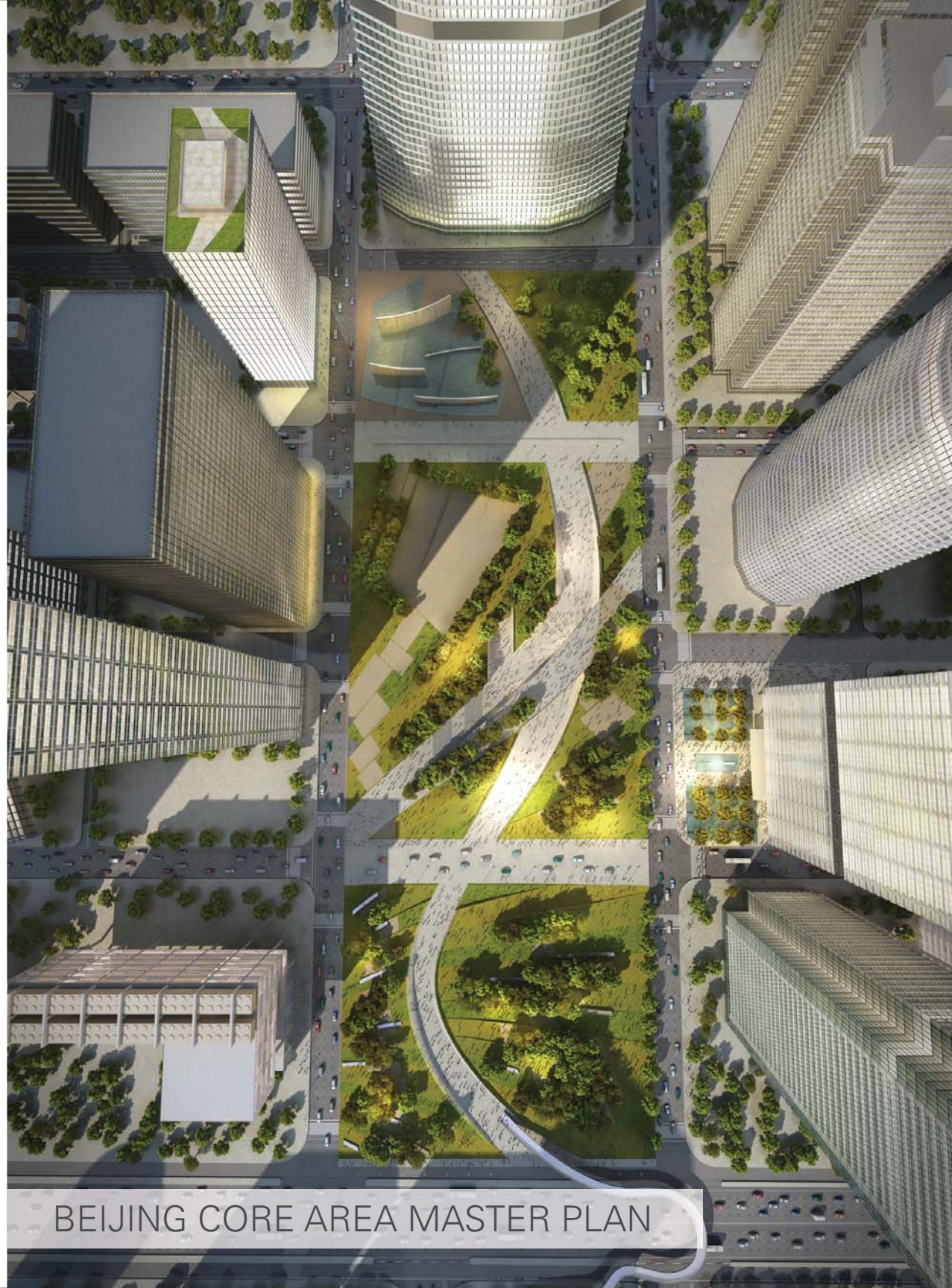
Inspired by the Chinese Rose—the city flower of Nanchang—the twin towers on Site A are the centerpiece of a new mixed-use, high-rise development. Rising to a height of 289 meters, they will be the tallest buildings in central China.

Each tower consists of 110,000 gross square meters of Class A office space, while two smaller buildings will each house 5,000 gross square meters of retail and conference functions for the towers.

Informed by the spiral-shaped growth patterns of Chinese Rose petals, the towers' organic, twisting profile will form a uniquely reflective and luminous surface. Grand in stature, yet sinuous in shape, these towers will appear unlike any others in the world.

At the top of each tower, vertical axis wind turbines are oriented towards prevailing winds. This array of turbines will collect enough energy to power all of the high-efficiency elevators in the building.

SOM created a master plan for the high-rise development and designed Site A to support a balanced mix of office, retail and public spaces. Construction is scheduled to begin in the summer of 2010.



## BEIJING CORE AREA MASTER PLAN

**Client:** Aviation Industry Corporation of China

**Size:** 2,200,000 sm



The focus of the master plan is on people and how they interact with buildings, public space and transportation within a dense area of the city. The intent is to inspire people within this urban environment through a careful balance of green landscape, pedestrian friendly access, and sustainable, mutually beneficial operations between all the buildings in the core area.

The strategy begins by creating a public park that serves as a civic amenity to pedestrians, and is an attractive destination point for commercial businesses. This plan can be realized by minimizing surface vehicles and placing main service and parking traffic below ground. The buildings will be oriented to respond most appropriately to the natural elements of their context.

This master plan is dependent on a sound private/public partnership to create an infrastructure that is reliable, sustainable and serves to benefit both business enterprise and the community. This cooperation between private and public is required to lower energy costs, decrease environmental harm, and create a civic enhancement for overall public benefit.

# MICHIGAN AVENUE TOWER



THOMAS KERWIN PROJECTS

MICHIGAN AVENUE TOWER  
CHICAGO, ILLINOIS

**Client:** The John Buck Company

**Size:** 514,000 sf



Anchoring the northwest corner of Lake Street and Michigan Avenue, this 41-story, 402-unit residential tower sits prominently beside the historic Carbide and Carbon Building. With an east-west orientation and narrow face addressing Michigan Avenue, the new tower complements its Art Deco predecessor. Its siting encourages a dialogue between the buildings while permitting enough space for each to establish its distinct presence.

The Michigan Ave. tower features two levels of retail and garage parking. Amenities include a club at level 6 incorporating a fitness center, lounge, game room and party room.

Outdoor space can accommodate large or small gatherings, and the building provides a rooftop pool and a dog run. Partially inset residential balconies on the north and south facades complement a clean, modern, highly polished face on Michigan Avenue.

The site is easily accessible to the shopping of north Michigan Avenue and the many attractions of Millennium and Grant parks.

# LATHROP HOMES

THOMAS KERWIN PROJECTS

LATHROP HOMES  
CHICAGO, ILLINOIS



**Client:** Lathrop Community Partners

**Size:** North Building: 88,800 sf  
South Building: 137,000 sf



Lathrop Homes is a low-rise housing project from the 1930s under redevelopment by the Chicago Housing Authority. The mixed-income community will combine restoration with new structures.

Two of the buildings designed by bKL will act as the gateway to Lathrop Homes. Located at the north and southwest corners of Diversey at Clybourn and Damen avenues, the new 6-story structures incorporate masonry facades designed to complement the original 1930s buildings in scale and proportion. The property includes studio, one- and two-bedroom apartments, ground-level retail, and interior parking.

## THE LEDGE AT SKYDECK CHICAGO



The Ledge at Willis Tower, formerly Sears Tower, was created to enhance a classic SOM building with an innovative addition that is in the spirit of the original design. The minimal five-sided glass balconies allow for views in all directions and provide an experience that approximates being suspended in the air. The ledges are approximately 4 feet deep, 10 feet high, and 10 feet wide. They are made of 1.5 inch laminated glass panels hung from a

steel frame that rides on rails, allowing them to be retracted into the building for cleaning and maintenance. A multi-disciplinary team at SOM conceived the design, created construction documents for the fixed elements, and worked closely with the design/builder of the movable glass ledges. This unique concept is showing promise as a feature in new towers currently being designed by the firm.

# SHANGHAI GRAND

## REAL ESTATE OFFICE TOWER



© SOM | Crystal CG

THOMAS KERWIN PROJECTS  
SHANGHAI GRAND REAL ESTATE OFFICE TOWER  
SHANGHAI, CHINA

**Client:** Shanghai Grand Real Estate Co., Ltd.

**Size:** 80,000 sm



Shanghai Grand Center is located in the Pu Dong New District of Shanghai, China. The site is bounded by Century Boulevard to the northeast, Xiang Cheng Road to the southeast, and Fu Shan Road to the west. It is a 41-story, 80,000 sm office tower. Restaurants, MEP plant rooms, bicycle and vehicular parking are provided within three below grade levels.

The concept for the project is one of reciprocal visual connections. The unique location midpoint along Century Boulevard between the magnificent towers of Lujiazui to the northwest and New Century Park to the southeast, allows the building to have visual connections to its adjacent surroundings as well as with the wider urban context of Pu Dong.

Two primary elements make up the exterior wall of the tower. The primary component is a textured wall that defines the massing of the building. Its shingle texture creates a contrast that helps define the volume of the atria. Its texture is derived from combining a desire to articulate the wall and a need for natural ventilation. Rather than trying to disguise operable vents in a planar cladding system, the vents become an opportunity to develop the articulation of the surface of the Tower. The atria are treated as sleek smooth volumes that are inserted into the main body of the building. Their clear glass permits a great level of transparency and openness that allows the occupant to feel as if he was out in the sky. It also allows for views from outside into the large open spaces inside the building.

# 645 WEST MADISON

THOMAS KERWIN PROJECTS

645 WEST MADISON  
CHICAGO, ILLINOIS



**Client:** Hines  
**Size:** 527,560 sf



Ideally situated for its use as an office tower, 645 W. Madison is located between Chicago's central business district—the Loop—and the West Loop, an emerging hub of business innovation and a popular destination for dining and nightlife. Bordered on the north by Madison Street, on the east by Desplaines Avenue and on the west by the Kennedy Expressway, the site is easily accessible via car, rail and bicycle.

The 19-story building consists of 15 office and two parking levels above a ground level containing 6,500 square feet of retail. A generous office lobby and building support areas—including an extensive bicycle facility—provide useful amenities.

Outdoor terraces are located at strategic locations throughout the building, including the east and west sides of the office amenity level. The top office level has a private roof terrace, and the building's roof has a public terrace accessible to all building occupants.

The typical office floor plate has been designed with lease spans that allow for maximum flexibility and efficiency in planning and construction. The floor plan is organized by a rational grid, which is also carried through to the façade expression.

A modern composition of masonry with a punched expression, the façade references the historical brick architecture of the surrounding neighborhood. Its large expanses of glass maximize natural light.

# SIOUX CITY ART CENTER

THOMAS KERWIN PROJECTS

SIOUX CITY ART CENTER  
SIOUX CITY, IOWA

**Client:** Sioux City Art Center

**Size:** 45,500 sf



The Sioux City Art Center (SCAC) showcases regional art of the upper Midwest and is used primarily for art education, musical performances and social gatherings that serve the city and the surrounding tri-state Siouxland community. The 45,500 sf complex is located at the southern gateway to downtown Sioux City, accessible and visible from the city's main highway, and symbolic of the ongoing revival and reconstruction of the area.

The SCAC is composed of distinct, highly articulated building elements organized around the central mass of a three-story atrium. The circulation sequence that begins in a garden and landscaped court continues via a serpentine grand stair that leads to studios and galleries. These program components, along with major storage and support functions,

are contained in an L-shaped block, organized as a series of alternating 10-foot and 20-foot bays that give scale and rhythm to the exterior walls. The regional architectural vocabulary of brick and surface ornament is reinterpreted to relieve the opaque walls enclosing storage and display spaces and to express a contemporary sensibility.

Despite the strict budgetary constraints faced with this project, SOM succeeded in creating a building that was not only remarkably inexpensive but which also received critical acclaim. Margaret Ann Everist, director of the Sioux City Art Association Board, described the SCAC as "way, way beyond our expectations . . . a piece of art in itself."



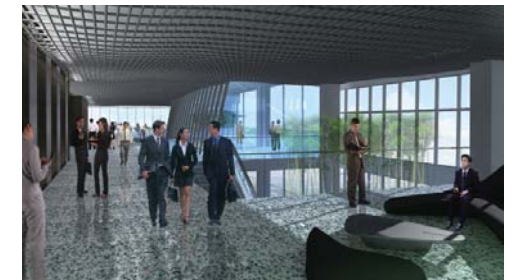
# GREENLAND ZHENGZHOU TOWERS

THOMAS KERWIN PROJECTS  
GREENLAND ZHENGZHOU TOWERS  
ZHENGZHOU, CHINA



**Client:** Greenland Group

**Size:** 616,000 sm



Greenland Zhengzhou Towers were designed with the intent to balance historical symbolism, cultural influence and contemporary innovation. This approach is evident in every detail, beginning with the exteriors of the buildings, their massing and expressive form reflecting the mountain formations found near Zhengzhou.

The lightness and delicacy of the skins of the buildings imply motion; the structural system is a highly efficient, dynamic frame. These create spaces suited to varied types of occupancy, seamlessly optimizing views and providing natural light throughout the buildings.

Sky-bridges with dramatic views connect the towers. Landscaped platforms, they offer repose, green space, and corporate and hotel amenities.

Environmentally, the towers require minimal resources while providing high performance. Sustainability is ensured through passive strategies harnessing and shielding the sun for energy savings and water reclamation. Office floors offer optimum efficiency through flexible, scalable, easily-configured spaces.

# 165 WEST SUPERIOR



**Client:** Magellan Development Group LLC  
MAC Management Co., Inc.

**Size:** 379,500 sf



This modern glass and masonry residential tower was inspired by the historical buildings in its surrounding River North neighborhood. Bordered on the north by Superior Street, on the west by Wells Street and on the east by LaSalle Street, the site includes a 34-story rental apartment tower and a 4-story podium. The 298 residential units occupy the tower and portions of the podium. Wrapping the perimeter of the second and third levels of the podium, they buffer the parking levels from the street.

In addition to the residential lobby, the ground level of the building consists of retail space with frontage on LaSalle and Superior streets, as well as a smaller retail space adjacent to the park. A fitness center, lounge and spa areas have direct access to the landscaped podium roof deck and outdoor lap pool. The semi-public parking garage—providing 109 parking spots—is located on levels 3 and 4 of the podium.

Set back 80 feet from Wells Street, the property creates a new park with extensive landscaping and a dog run that is accessible to the public.

# GARRISON POINT TOWER



THOMAS KERWIN PROJECTS

GARRISON POINT TOWER  
TORONTO, CANADA

**Client:** Cityzen Development Group  
Diamondcorp

**Size:** 366,000 sf



The master plan of Garrison Point consists of five towers designed by a team including bKL Architecture, Hariri Pontarini Architects, and Claude Cormier. bKL is designing Garrison Point Tower, which will be located at the intersection of Strachan Avenue and Ordnance Street.

Once completed, an inviting pedestrian neighborhood will emerge, with patios, a 3.9-acre park, shops, and cafes nestled within an urban environment.

**Client:** Aviation Industry Corporation of China

**Size:** 130,000 sm



The elegant use of materials in bKL's design for the AVIC Headquarters exudes restrained sophistication. City views and natural light throughout the building enhance the practical requirements for an office, such as optimal efficiency in floor plans.

A large open plaza frames the building as a civic monument, where its form and lightness in skin are balanced with its position on the site and relationship to other buildings and the park.

Sustainable strategies include water reclamation and grey water systems as well as passive strategies to control solar gain. Daylight is admitted to interior spaces through a well-detailed curtain wall system of frameless, clear LoE glass. Its colored ceramic frit and a metal screen of aluminum and stainless steel provide shading and minimize heat gain.

AVIC HEADQUARTERS

# CHONGMING ISLAND



**Client:** Shanghai Planning Bureau

**Size:** 1,940 square kilometers



The plan for Chongming Island called for the creation of three new cities, a transportation infrastructure and the preservation of wetlands, forests, endangered species and agriculture areas. An intelligent transportation plan on the island will allow denser cities and consolidate growth for greater preservation of natural habitats. A strong emphasis on eco-tourism will enable Chongming Island to position itself as a destination of choice for both Shanghai residents and international visitors. Chongming Island will become a prime example of smart growth in action, embracing population growth and infrastructure expansion without sacrificing agriculture, wildlife or ecology.

SOM's master plan identifies eight themes around which development and ecological restoration will be organized. The themes include habitat enhancement,

organic farming, sustainable industries, transportation, village preservation, new cities, and green infrastructure systems. In order to provide additional depth of knowledge to the study, SOM assembled a team of international experts specializing in organic farming, hydrology and sustainability.

The development of Chongming Island is an important first step in the Chinese government's new environmental preservation initiative. Identified by the Shanghai government as a model project for sustainable development and environmental stewardship in China, Chongming Island will become a new international cultural center, a model for environmental sensitivity and a pioneer of 21st century sustainable technologies.



**Client:** Zhejiang Sunion Group Ltd.

**Size:** 168,000 sm



These two glass towers amplify the intersection of Jinhua's primary north-south axis and the Wu River, a key site in the city. Their sculptural nature creates a striking landmark in this area, a region known for the beauty of its mountains, rivers, caves and natural stone formations.

The varied angularity of the towers and podium buildings also reflect differing interior functions. Retail, offices, hotels, and residences are spread over the 1.8 million square foot (168,000 square meter) mixed-use structure.

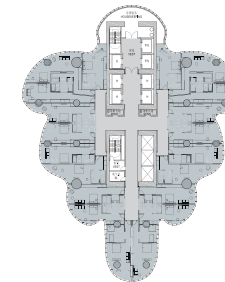
Inspired by these forms, a podium of stone and brushed metal panels supports two towers sheathed in a crystalline glass skin. The transparency and translucency of the glass respond to programmatic and environmental conditions; its reflectiveness emphasizes the angles of the towers.



JINGHU MIXED-USE TOWER

**Client:** Ssigen Group

**Size:** 113,500 sm



Since the early Tang Dynasty, Shaoxing has been known throughout China for its silk production. This continuing legacy is the inspiration for bKL's design of both the form and surface of this new 820 ft (250 meter) mixed-use hotel and apartment tower set on a downtown lake.

Glass, metal fabric and metal panels are woven into a skin that rolls and falls as a silk drapery. The resulting floor configuration provides southern exposure for all 260 serviced apartments and a unique expression for each hotel room tier. The building's surface is a pattern of open, partial, and solid material inherently providing passive solar control.

The undulating tower's skin lifts off the ground to reveal multi-story entry lobbies and cores. A luminous horizontal form encloses the hotel's conference, meeting and business center; a ballroom opens to the adjacent roof garden. A restaurant, bar and lounge float at the top, overlooking the lake and historic city beyond.

Amenity floors, marked externally by a separation of the building skin between the lower hotel floors and the upper apartment levels, include a pool, fitness center, and lounge. Commercial space in the tower is united with the street and surrounding urban environment by a swath of building skin designating its presence.

## ZHENGZHOU GREENLAND PLAZA

**Client:** Greenland Group**Size:** 240,000 sm

SOM secured the commission for a new mixed-use development in Zhengzhou, China, through an international competition. At 280 meters in height, it will be the tallest building in the city of Zhengzhou. Advanced environmental technology, such as a building envelope that reduces solar heat gain and allows the tower to breathe, will make it appropriate to the climate of Zhengzhou.

The atrium in the Zhengzhou hotel is accentuated by a solar reflector that was specifically designed, through an intensive series of daylighting studies, to maximize the amount of natural light. The surfaces of the atrium are finished

to help drive light deep within. The atrium is equipped to modulate light level-based on the available light provided by the reflector through a series of light-sensing dimmer switches. This feature will enable the atrium to consume less energy and generate less heat throughout the year.

The hotel atrium also features a unique, smart control system that utilizes an internal stack effect and external wind pressure to achieve a well-ventilated environment. The smart control system operates in different modes to move large volumes of fresh air through the indoor environment using natural forces.





SHANGRI-LA  
AT THE FORT

**Client:** Shangri-La Hotels & Resorts

**Size:** 215,000 sm



SOM is designing a 230-meter tall tower for the international luxury deluxe hotel brand, Shangri-La Hotels & Resorts. The tower, containing 100,000 gsm of residential and 60,000 gsm of hotel space, will meet the demands of an area with growing national and international importance, while creating an environment reflective of Shangri-La's award-winning hospitality and service.

The tower holds a variety of large and small residential units that support the Philippine and International lifestyle. All units have outdoors spaces, natural ventilation, deep shaded façades, and expansive views of Manila Bay and the surrounding landscape. The podium structures contain meeting and conferences spaces, restaurant and retail venues, and face onto a common active pedestrian corridor.

The site, Fort Bonifacio, is ideal for this five-star hotel and residence. The Fort, also known as Bonifacio Global City, is a new vibrant mixed-use district in the city of Manila that is evolving into the country's center for trade and growth, making it the prime location for office, residential, retail and hospitality space in the Philippines.

WAUKEGAN DOWNTOWN

LAKEFRONT MASTER PLAN



**Client:** City of Waukegan

**Size:** 1,400 acres



The Waukegan Lakefront-Downtown Urban Design Plan articulates a visionary, long-range plan to strengthen the City's fabric and overcome barriers created by existing infrastructure. Through extensive community meetings, the development of multiple planning alternatives, and close collaboration with development economists, the SOM team created a visionary plan within a realistic implementation framework.

A key component of the plan is strengthening connections between downtown and the surrounding neighborhoods through development initiatives and infrastructure projects. Development initiatives include strengthening existing businesses through storefront rehabilitation programs and the addition of downtown residents. Community institutions, such as educational and governmental facilities, are also being strengthened to add stability to the downtown.

Several infrastructure projects are also proposed to strengthen the physical fabric of the city and overcome barriers between different portions of the City. In addition to several new streetscape proposals, one key infrastructure project is a proposed cap over an existing 4-lane highway. A new "town square" is proposed on this cap to create a significant new public open space for Waukegan. Further, the cap will physically join the downtown to Waukegan's harbor, one of the finest in Illinois.

The Waukegan Lakefront-Downtown Urban Design Plan illustrates SOM's ability to create compelling redevelopment plans that bring communities together. Through creative design solutions, diligent work with community representatives, and the redefinition of Waukegan's future, this plan presents a logical vision for the long-term benefit of the city.



LAKESHORE EAST HOTEL  
AND RESIDENTIAL TOWER

**Client:** Magellan Development Group LLC  
**Size:** 826,552 sf



The site of this mixed-use tower is located at the southwest corner of Lakeshore East Park in the heart of Downtown Chicago. The four level podium base and pool deck occupy the entire site and contain amenities, shared and exclusive, for both hotel guests and residents.

The lower part of the tower contains two hotels, with 684 combined guest rooms. The upper part of the tower contains 577 living units. The project is designed to comply with LEED Silver Certification and a green/sustainability theme in both its construction and its operation.

CHICAGO. MANILA. DALLAS. SHANGHAI. SHAOXING. NINGBO. SUZHOU. ONTARIO. SEOUL.  
 LONDON. EVANSTON. SIOUX CITY. HANGSHOU. AUSTIN. TORONTO. NEW YORK. MINNEAPOLIS.  
 MEMPHIS. HIGHLAND PARK. MARYLAND HEIGHTS. CONSHOHOCKEN. INDIANAPOLIS. WAUKEGAN.  
 DETROIT. NANJING. GUANGZHOU. ZHENGZHOU. HONG KONG. BARCELONA. SHENZHEN.

50 South Sixth Street



**50 South Sixth Street/Hines**

**Minneapolis**, Design and Engineering Services for 30-story, 900,000 sf office building for law firm with speculative office space, retail and parking, 2001, Minneapolis, Minnesota

**111 West Wacker**, Office building, 1991, Chicago, Illinois

**444 North Michigan**, Reconfiguration of existing building lobby in order to take full advantage of the views and natural light along Michigan Avenue including exterior cladding and storefront wrap at street level, 2,500 square feet, 2004, Chicago, Illinois

**555 West Monroe**, 450,000 sf office building which houses the corporate headquarters for Quaker, 2002, Chicago, Illinois

**American United Life Insurance**, Master plan design for corporate headquarters, 1995 - 1996, Indianapolis, Indiana

444 North Michigan



Chicago Symphony Orchestra



**National Trade Center at Exhibition Place**

, Programming, master planning and conceptual design of a prototype; preparation of documents for a design/build competition; and evaluation of competition submissions. In association with Bregman & Hamann Architects of Ontario, Canada, 1995, Toronto, Canada

**Avery Fisher Hall** at Lincoln Center Competition, design competition for renovation of home of New York Philharmonic, 2002, New York, New York

**China Unionpay Park Master Plan**, Master planning, landscape design and concept architectural design for office, research, conferencing and residential functions inside a 21.6 hectare corporate office park of China UnionPay, 2004, Shanghai, China

**Chicago Symphony Orchestra**, Improvement program to remodel and restore the stage and 2,566-seat hall including improved performance acoustics and lighting, new seating and pipe organ, remodeling of back-stage facilities, new rehearsal hall, and improved public access safety, 42,000 square feet, 1994, Chicago, Illinois

DePaul Univ. & Symphony Center



**Chong Qi Sustainable Highway Landscape Corridor**

, Landscape and conceptual design of a 30 km stretch of highway and ecological buffer zone running across Chongming Island to be completed in 2010 for the World Expo. The Corridor connects the island to Shanghai through the "Yangtze Tunnel and Bridge" project to the south and to Jiangsu Province to the North, 2006, Shanghai, China

**DePaul University & Symphony Center** Mixed-Use Development, Architectural, interior design, mechanical, electrical, plumbing, civil and structural engineering services for an 88-story, 1,000,000 sf residential tower including 600 parking spaces as well as 350,000-gsf of academic space for DePaul's School of Music and School of Theatre, Feasibility Study, Chicago, Illinois

**E10 & W7**, Infrastructure, Master Planning, Programming, Urban Design for parcels E10 & W7 at Huangpu Riverbanks for a mixed use development, 2003, Shanghai, China

China Unionpay Park Master Plan



E10 & W7



Icon Center



Hangzhou Convention Center



Long Center for The Performing Arts



**Hangzhou Convention Center,** Competition entry for a 62,500 sm state-of-the-art, sustainable convention facility reinforcing the garden city quality of Hangzhou as well as accommodating expansion and modification over time, 2004, Hangzhou, China

**Icon Center,** Architecture, structural, MEP and interior design Services for 3,250,000-sf mixed-use development including Class 'A' office space, 5-star hotel, private condominiums and retail space, Ongoing, Dallas, Texas

**John Hancock Renovations,** Renovation of the public spaces leading to the condominiums of the John Hancock Building and exterior improvements including a new canopy for the entrance, 2004, Chicago, Illinois

**KAL Operation Center,** Aircraft maintenance hangar and office building featuring a 300 sf x 600 sf (90 meter x 180 meter) clear span roof structure, Kimpo Airport, 1995, Seoul, Korea

**Chagall Secondary Roof Structure,** Design of glass canopy to limit damage to Chagall's 70-foot mosaic following restoration and rededication, 1994, Chicago, Illinois

**Long Center for the Performing Arts,** Architectural services for the renovation of performing arts facilities, including a 2,400-seat theater, an 800-seat theater and a smaller studio theater, 7,000 sf of office space and 2,000 sf of donor/patron space, 2004, Austin, Texas

**Memphis Brooks Museum,** renovation and expansion of existing museum, 1999, Memphis, Tennessee

**MYE Toronto,** Design of a new residential complex consisting of two 40-50-story towers, totaling 1,000 apartment units. Amenities will include retail shops, parking and a state-of-the-art health club, 2004, Toronto, Canada

**Ningbo Bank of China Headquarters,** Architecture, structural engineering, civil engineering and MEP for a 200-meter tower with a twisting form that maximizes views from its office spaces to surrounding landmark buildings and prominent urban districts, Ongoing, Ningbo, China

**Ningbo Jiang Dong Urban Design Plan,** Master plan for the redevelopment of 22 hectares (55 acres) within the downtown core of Ningbo encompassing 6 million square feet of development, 2005, Ningbo, China

**Philippine Stock Exchange,** Architecture, civil engineering, life / fire safety engineering, MEP engineering and structural engineering for a 200-meter tower that will house a 3,000 gsm trading floor, consolidated office space for stockbrokers, headquarters for multi-national firms and amenities including a fitness center, food court and chapel, Ongoing, Manila, Philippines

Ningbo Jiang Urban Design



Philippine Stock Exchange



Ssiger International Plaza



Vila Olimpica



Suzhou International Expo Center



**Ravinia Festival,** Ongoing renovation project for outdoor music facility, 1998, Highland Park, Illinois

**Riverport Casino Center,** Site and master planning and architectural and engineering design services for land-based portion of a riverboat casino complex including entertainment facilities, a 300-room hotel development, a 1,500-car/parking garage, and surrounding site improvements, 1997, Maryland Heights, Missouri

**Sears Tower Security Renovations,** Development of strategies to incorporate updated security devices while maintaining a friendly environment and to create separation between tenant and retail circulation, includes the addition of planters to be used as barriers at the Franklin Street entrance, 2004, Chicago, Illinois

**Shanghai Center,** Architecture, MEP, structural engineering services for 580-meter mixed-use tower competition in Pudong, 2007, Shanghai, China

**Shanghai Shipyard,** Urban Design Competition for master plan of Shanghai Shipyard district to be fully, 60 hectares, 2005, Shanghai, China

**Shaoxing Di Dang New Town Master Plan,** Master plan for commercially vibrant, functionally efficient, easily accessible and environmentally comfortable urban center, connecting the old and new city, 2006, Shaoxing, China

**Ssiger International Plaza Phase II,** Architecture, structural engineering and MEP for the design of a 56-story, 200-meter building for the City of Cixi. Configured in plan as a trio of individual towers, the building massing facilitates views and reduces wind forces by creating large vertical openings in the building mass, 2011, Cixi City, Shejiang, China

**Suzhou International Expo Center,** Architectural design and engineering for a 2.8 million sf convention center and exhibition facility, 2004, Suzhou, China

**Takshing House Redevelopment,** Architecture, structural engineering, civil engineering, MEP and interior design services for 953 sm redevelopment located in the heart of the Central district in Hong Kong, including office and retail, Ongoing, Hong Kong, China

**Tower Bridge IV,** Phase I: 45,000 sf (4,182 sm) plaza and parking garage, 1994; phase II: 150,000 sf (13,941 sm) parking garage and office building, 1996, Conshohocken, Pennsylvania

**Vila Olimpica,** Multi-use complex including 460-room luxury hotel, offices and retail space, 1992, Barcelona, Spain

**McCormick Place Long Range Planning Study,** Master plan and architectural design guidelines for exposition center expansion, domed stadium, and retail arcade, 1991, Chicago, Illinois

SPEAKING ENGAGEMENTS

Speaking engagements given to various organizations by Mr. Kerwin:

"Future Success: The Changing Context, Business and Practice of Architecture." AIA Chicago. Panelist. 17 March 2015.

"Take Me to the River Cruise: Design Along the Chicago River." Panelist discussion on Wolf Point. 12 Sept. 2013.

"Wolf Point." Chicago Building Congress Luncheon. Keynote Speaker. 17 April 2013.

"The Chicago 2016 Olympic Bid." 2009 Upper Midwest Planning Conference. Co-Keynote Speaker with Arnold Randall. 24 Sept. 2009.

"The Link Between Corporate Responsibility, Civic Involvement and the Built Environment." Ball State University College of Architecture and Planning Alumni Symposium. Speaker. 11 Sept. 2009.

"Chicago's Bid for the 2016 Olympics." 2009 NCARB Annual Meeting and Conference. Co-Keynote Speaker with Philip Enquist. 20 Jun. 2009.

"Olympic Might: The Impact of the Olympics on Urban Development." Coverings 2009 Panel Presentation with Andreu Arriola-Maderoll of Arriola & Fiol, Moderated by Susan Szenasy, Editor of Metropolis Magazine. Speaker. 21 Apr. 2009.

"The Link between Chicago's Built Environment, Civic Involvement and Corporate Philanthropy." Corporate Responsibility Group of Greater Chicago (CR Group). Speaker. 17 Feb. 2009.

"Chicago 2016." American Institute of Architects (AIA) Northeast Illinois Chapter. Speaker. 29 Jan. 2009.

"Bringing the Olympic Games to Chicago." Illinois Institute of Technology. Co-Speaker with Bob Berland. 4 Nov. 2008.

"Activities and Challenges Facing the 2016 Olympics." The Realty Club. Speaker. 31 Oct. 2008.

"Chicago 2016 Olympic Bid and the Reshaping of Illinois." American Planning Association (APA). Speaker. 30 Oct. 2008.

"Chicago 2016." Ball State University College of Architecture and Planning Alumni Symposium. Speaker. 19 Sept. 2008.

"Chicago's Plan for the 2016 Olympics." 2008 Joint Congress of the Association of Collegiate Schools of Planning. Speaker. 9 Jul. 2008.

"Chicago's Plan for the 2016 Olympics." American Planning Association (APA). Co-Speaker with Philip Enquist. 24 Jun. 2008.

"Plans for the 2016 Olympics." Northwestern University, Kellogg School of Management, GIM South American Leadership Team. 12 Mar. 2008.

# “ A Stronger City, a Stronger Olympic Movement ”

Chicago Architecture Foundation.

Co-Speaker with Patrick G. Ryan. Chicago, IL. 23 Oct. 2006

“Plans for the 2016 Olympic Games.” U.S. General Services Administration (GSA). Speaker. 11 Feb. 2008.

“Project: Chicago 2016.” Hispanic American Construction Industry Association (HACIA) Membership Meeting. Speaker. 9 Jan. 2008.

“Bringing the Olympic Games to Chicago.” American Institute of Architects (AIA) Chicago Chapter Annual Meeting. Co-Speaker with Bob Berland. 6 Dec. 2007.

“Logistic Challenges of the 2016 Olympics.” Council of Supply Chain Management Professionals. Co-Speaker with Doug Arnot. 5 Dec. 2007.

“2016 Olympic Games Planning.” American Institute of Architects (AIA) Annual State Chapter Meeting. Speaker. 2 Nov. 2007.

“Chicago’s Master Plan for Hosting the Olympics.” American Society of Civil Engineers. Speaker. 24 Oct. 2007.

“The Socio-Economic Impact of the 2016 Olympic Bid.” Make A Wish Foundation. Speaker. 23 Oct. 2007.

“Chicago’s Bid for the 2016 Olympic Summer Games.” CLE International’s Chicago Land Use Law Conference. Co-Speaker with Steve Holler. 18 Oct. 2007.

“2016 Olympic Planning Discussion.” Western Society of Engineers Annual Meeting. Speaker. 9 Oct. 2007.

“Shaping Chicago’s Skyline: A Lecture by Thomas Kerwin, FAIA.” Fort Wayne Museum of Art. Speaker. 4 Oct. 2007.

“Plans for Chicago’s Bid to Host the 2016 Olympics.” National League of Cities Leadership Summit Chicago Area Tour. Speaker. 28 Sept. 2007.

“The 2016 Olympic Plan.” Society of Illinois Construction Attorneys (SOICA). Speaker. 25 Sept. 2007.

“Discussion on Chicago 2016 Olympic Planning.” Structural Engineers Association of Illinois. Speaker. 11 Sept. 2007.

“Carrying the Torch: Chicago’s Bid to Host the Olympics.” CoreNet Global, Chicago Chapter. Panelist. 12 Jul. 2007.

“Want to know more about what the Olympics mean for Chicago architecture?” Chicago Architecture Foundation. Co-Speaker with Bill Scherr. 28 Jun. 2007.

“The Quest for 2016: Chicago’s Olympic Plan and Opportunities for the Business Community.” Association of Corporate Counsel, Chicago Chapter. Speaker. 19 Jun. 2007.

“The Changing Landscape of Services Industries in China.” Midwest US-China Association. Speaker. IIT - Kent Law School. Chicago, IL. 12 Apr. 2007.

“The Olympic Plan.” Chicago Architecture Foundation. Co-Speaker with Patrick G. Ryan. Chicago, IL. 1 Mar. 2007.

“Architects for Daley.” Co-Chair and Introduction of Mayor Richard M. Daley. Chicago, IL. 20 Feb. 2007.

“AIA Designight.” American Institute of Architects (AIA) Chicago. Award Presenter. Navy Pier, Chicago, IL. 27 Oct. 2006.

“A Stronger City, a Stronger Olympic Movement.” Chicago Architecture Foundation. Co-Speaker with Patrick G. Ryan. Chicago, IL. 23 Oct. 2006.

“Sustainability in Practice: Pearl River.” Hines Global Excellence Officers Conference. Speaker. Jersey City, NY. 10 Oct. 2006.

“Chicago’s Bid for the 2016 Olympics: The Brand, the Politics & the Role of PR.” 12th Annual Networking Dinner. Arthur W. Page Society. The Drake Hotel. Chicago, IL. Panelist. Aug. 24 2006.

“Chicago’s Road to China.” ABC7 News Chicago. WLS-TV, Chicago. Guest. 15-20 May 2006.

“Building Community Through Design.” AIA Chicago Professional Development Conference. Moderator/Facilitator. 9 Mar. 2006.

“Chicago 2016: Winning a Summer Olympic Bid: What Will it Mean for The Business & Real Estate Community?” Illinois Real Estate Alumni Forum. Panelist. 1 Mar. 2006.

Annual Meeting. American Institute of Architects (AIA) Chicago. Chair. 8 Dec. 2005.

“Tod Williams & Billie Tsien Lecture.” American Institute of Architects (AIA) Chicago. Moderator. Rubloff Auditorium. 10 Nov. 2005.

“AIA Designight.” American Institute of Architects (AIA) Chicago. Moderator. 21 Oct. 2005.

“Chicago Architecture.” Bill Campbell. Chicagoing, WLS-TV, Chicago. Guest. 23 Sept. 2005.

“Parkitecture.” Grant Park Panel Discussion. Panelist. 17 May 2005.

Professional Development Conference. American Institute of Architects (AIA) Chicago. Chair. 3-4 Mar. 2005.

“Re Think Re Design Re Cycle.” American Institute of Architects (AIA) Chicago. Speaker. Daley Plaza. 19 Aug. 2005.

“Innovation and Productivity in Planning, Design, Construction.” Moderator/Facilitator. FHWA Vertical Construction Scan. 5 & 6 Aug. 2004.

“Future State of the Economy: Industry Outlook.” Speaker. The Young Executives Club. 24 Jan. 2002.

“The General Motors Project for Detroit’s Renaissance Center.” Speaker. Chicago Architecture Foundation Lunchtime Lecture Series. 9 Jun. 1999.

PUBLICATIONS

Articles in the national and international media crediting, quoting or authored by Mr. Kerwin:

Bentley, Chris. "Jewel of Learning." The Architect's Newspaper. 06 March 2015.

Bentley, Chris. "When will Chicago get its next supertall skyscraper?" WBEZ91.5 Curious City Series. 28 Jan. 2014.

"Catching up with bKL: 2014 Edition." The Chicago Architecture Blog. 30 Dec. 2014.

Strahler, Steven R. "This is the hottest job sector in Chicago." Crain's Chicago Business. 27 Sept. 2014.

"Innovative Design Comes to Toronto." Toronto Metro. 22 Sept. 2014.

"All About the New Skyscraper at 720 North LaSalle." The Chicago Architecture Blog. 02 Sept. 2014.

Tufano, Lizzie Schiffman. "Skyscrapers at 167 W. Erie St., 720 N. LaSalle St. Approved by Aldermen." DNAinfo. 26 August 2014.

Bentley, Chris. "Feature> Remaking Lathrop." The Architect's Newspaper. 06 August 2014.

Gallun, Alby. "Designing a 10-Story Schoolhouse." Crain's Chicago Business. 24 July 2014.

Tufano, Lizzie Schiffman. "Dual Mixed-Use Developments at 167 W. Erie, 720 N. LaSalle Streets Proposed." DNAinfo. 20 May 2014.

Spula, Ian. "Unveiled> bKL Architecture Cooks Up a Replacement for Chicago's Howard Johnson Motel." The Architect's Newspaper. 09 May 2014.

Matthews, David Lee. "Hiring ticks up at architecture firms." Crain's Chicago Business. 24 March 2014.

"bKL Answers Your Questions About 200 North Michigan Avenue." The Chicago Architecture Blog. 09 Sept. 2013.

Gallun, Alby. "Developers see life on rundown stretch of Michigan Avenue." Crain's Chicago Business. 06 July 2013.

"What's Going Up at bKL?" The Chicago Architecture Blog. 12 March 2013.

"The Backstory on bKL - The Young Chicago Firm Leading the Pack on Wolf Point." The Chicago Architecture Blog. 10 Feb. 2013.

"Best Of Chicago 2012: Best Example Of Chicago's Global Footprint." Newcity. 07 Nov. 2012.

Tekippe, Abraham. "Architecture Is Much More Fun For Me Now." Crain's Chicago Business. 24 Aug. 2012.

Bentley, Christopher. "Sparkling Intellects." The Architect's Newspaper. 14 Aug. 2012.



“ Architecture is much more fun  
for me now than it’s ever been. ”

Crain’s Chicago Business. 24 Aug. 2012.

“bKL Tower Coastin To The Sky In Lakeshore East.” Curbed Chicago. 10 Aug. 2012.

“Exclusive: Interview With Thomas Kerwin of bKL Architecture.” Cityzen. 19 July 2012.

Sharoff, Robert. “Chicago Attracts New Towers With River Views.” The New York Times. 10 July 2012.

Kamin, Blair. “City undergoes apartment-building boomlet; as recession eases, developers aim for both the boring and the bright.” Chicago Tribune. 17 June 2011.

Bentley, Christopher. “Three’s a Charm?” The Architect’s Newspaper. 11 June 2012.

Brake, Alan G. “Unveiled: Lakeshore East Apartments.” The Architect’s Newspaper. 06 June 2011.

Rose, Barbara. “Thomas Kerwin ‘07, Taking a Firm Approach to ‘Sustainable, Vibrant’ Architecture.” Kellogg World Alumni Magazine. Spring 2011.

Stephens, Suzanne. “The Ledge at Skydeck Chicago” Architectural Record. May 2011.

“Who’s Who 2009: Architecture,” Crain’s Chicago Business. 8 Sept. 2009.

Harris, Melissa. “It’s game on for Olympic Games giving.” Chicago Tribune. 20 Sept. 2009.

Kerwin, Thomas. “Kellogg Profiles: Thomas Kerwin, Managing Partner, Skidmore, Owings & Merrill LLP” Kellogg Executive MBA Snapshot. 9 Sept. 2009.

Brake, Alan. “Playing it Safe? Chicago’s Pragmatic Olympic Bid Gamble.” The Architect’s Newspaper. 18 March 2009.

Torres, Marta. “The public sector and the Middle East: the answer to the crisis.” La Razón. 1 Mar. 2009.

Bradley, Ben. “Inside Chicago’s Olympic Plan.” ABC 7 Chicago. 12 Feb. 2009.

Kerwin, Thomas. “MBA: ‘Making Better Architecture?’” DesignIntelligence. Nov./Dec. 2008.

Peretti, Thomas. “Shanghai Mixed-Use Tower Breaks Ground.” Commercial Property News. 29 Sept. 2008.

“Who’s Who 2008: Architecture.” Crain’s Chicago Business. 1 Sept. 2008.

Webber Sadovi, Maura. “Skyline Gets Facelift Ahead of Asian Games.” Wall Street Journal. 20 Aug. 2008: page C10.

Rogers, Phil. “Chicago Architect Praises Beijing Venues.” NBC 5 News Chicago.WMAQ TV. 18 Aug. 2008.

Kamin, Blair. “Behind Beijing’s New Icons.” Chicago Tribune. 3 Aug. 2008.

Kerwin, Thomas. “Building Tall (And Designing Deep) in China.” Architectural Review. Jul. 2008: pages 78-80.

Bey, Lee. “World Leader.” Chicago Architect. Mar.-Apr. 2008: page 32.

“Who’s Who 2007: Architecture.” Crain’s Chicago Business. 4 Sept. 2007.

Stribling, Dees. “Chicago Carries a Torch for the Rings,” The Stalin Report. 20 Jul. 2007.

Wilkey, Maureen. “Judging the Olympics’ impact on the city.” Illinois Real Estate Journal Newsletter. 17 Jul. 2007.

Stribling, Dees. “Chicago Real Estate: Implications of the 2016 Olympics Bid.” Commercial Property News. 13 Jul. 2007.

Bordenaro, Michael. “Collaborative Achievement: New AIA Chicago Office.” AIA Focus. May 2007: pages 18 - 22.

Lengerich, Ryan. “Hoping to Shape Chicago’s Skyline: City native helps design 2016 Olympic Village.” The News-Sentinel. 18 May 2007.

Levine, Jay. “Chicago Businesses Bolster 2016 Olympic Bid.” CBS 2 Chicago. WBBM TV. 8 May 2007.

Osnos, Evan. “Olympic Victory Made in China.” Chicago Tribune. 22 Apr. 2007.

Bradley, Ben. “Final Push for U.S. Bid of 2016 Summer Games.” ABC7 News Chicago. WLS-TV. 10 Apr. 2007.

Bellandi, Deanna. “Olympics Would Follow In Footsteps Of Two World’s Fairs.” The Associated Press. 8 Apr. 2007.

Kozloff, Howard. “The Windy City Reaches for Its Rings.” UrbanLand. Mar. 2007: pages 72-75.

“News Briefs: Kerwin and Lee Elected Fellows.” AIA Focus. Mar. 2007: page 8.

Petersen, Laurie. “An Olympian Effort: Chicago Goes for The Games.” AIA Focus. Mar. 2007: pages 12-18.

Bergen, Kathy. “Brains Behind the Bid.” Chicago Tribune. 4 Mar. 2007.

Dillman, Lisa. “Chicago’s long Olympic wait.” Los Angeles Times. 20 Feb. 2007: page D7.

Pridmore, Jay. “A New Order.” Chicago Magazine. Feb. 2007.

Hinz, Greg. “After the Games.” Crain’s Chicago Business. 29 Jan. 2007.

Duggan, Daniel. “Passage to China.” Illinois Real Estate Journal. 2 Jan. 2007.

Webb, Michael. “An American in China.” MARK. Dec. 2006 / Jan. 2007: pages 110 - 119.

Bergen, Kathy and Blair Kamin. “Array of talent forms base for Chicago’s Olympics bid.” Chicago Tribune. 3 Dec. 2006.

Kamin, Blair. “Architecture Notes.” Chicago Tribune. 16 Oct. 2006.

Kamin, Blair. “The Olympian task of Kerwin and Enquist: Pair shapes city’s bid to land 2016 Summer Games.”

Chicago Tribune. 17 Sept. 2006.

Nance, Kevin. “70 Years: Skidmore, Owings & Merrill, Building on Tradition.” Chicago Sun-Times. 24 Sept. 2006.

Nance, Kevin. “It Takes an Olympic Village.” Chicago Sun-Times. 24 Sept. 2006.

Kamin, Blair. “It’s How, Not Where: Olympic Stadium plans could either ruin or fulfill Olmsted’s Chicago park vision.” Chicago Tribune. 24 Sept. 2006.

Nance, Kevin. “Big Dream Could Bring City Full Circle.” Chicago Sun-Times. 21 Sept. 2006.

Kamin, Blair. “The Olympian task of Kerwin and Enquist: Pair shapes city’s bid to land 2016 Summer Games.” Chicago Tribune. 17 Sept. 2006.

Lubell, Sam. “SOM’s skyscraper innovation has moved to China.” Architectural Record. 15 Jul. 2006.

Lubell, Sam. “SOM designs three towers in Nanjing.” Architectural Record. Special Supplement. May 2006.

Yu, Linda. “Linda Yu’s Road to China.” ABC7 News Chicago. WLS-TV, Chicago. 15-20 May 2006.

Frangos, Alex. “Way Up and Far Out: Plans for Fanciful Skyscrapers Proliferate; Are Some Too Eccentric to Lure Tenants?” Wall Street Journal. 19 Apr. 2006: pages B1+.

“2006-2007 Compensation & Salary Survey.” DesignIntelligence. Report 196: Vol. 12 No. 3; Mar. 2006.

“Project Diary SOM’s Radical Renovation in Detroit, the G.M. Renaissance Center, Raises Hopes for John Portman’s Famous Icon of the 1970’s.” Architectural Record. Feb. 2006: pages 82-91.

Schlossman, Peter. “Further Excellence.” AIA Focus. Jan. 2006. page 7.

Kerwin, Thomas. “Thank You Alice.” AIA Focus. Dec. 2005: page 7.

Kerwin, Thomas. “AIA Chicago and the CAF.” AIA Focus. Nov. 2005: page 7.

Kerwin, Thomas. “Design Matters.” AIA Focus. Oct. 2005: page 7.

Kerwin, Thomas. “And the Survey Says.” AIA Focus. Sept. 2005: page 7.

Kerwin, Thomas. “Architecture Not by Architects.” AIA Focus. Jul./Aug. 2005: page 7.

Kerwin, Thomas. “CTA: Other Cities Wish They Had Our Problem.” AIA Focus. Jun. 2005: page 7.

Kerwin, Thomas. “IAPAC, Member Survey.” AIA Focus. May 2005: page 7.

Kerwin, Thomas. “Other Cities Wish They Had Chicago’s Transit Problems.” Crain’s Chicago Business. 23 May 2005: page 7.

Kerwin, Thomas. “Historic Preservation.” AIA Focus. Apr. 2005: page 7.

Kerwin, Thomas. “Sustainability.” AIA Focus. Mar. 2005: page 7.

Kerwin, Thomas. “Getting the Message Out There.” AIA Focus. Feb. 2005: page 7.

Dougherty, Geoff. “Service Sector Gathering Steam.” Chicago Tribune. 14 Sept. 2004: sec. 3, page 1+.

Kerwin, Thomas. “Moving Forward in 2005.” AIA Focus. Jan. 2005: page 7.

Smith, Charles. “President’s Letter, Building on Success.” AIA Focus. Dec. 2004: page 7.

“Midwest Hot Spots.” Grid. Sept. 2001: pages 76-77.

Richardson, Patricia. “Chicago’s Rising Stars: 40 Under 40.” Crain’s Chicago Business. 19 Nov. 2001.

Andereck, Kelly Jon. “The Integrated PV Learning Curve.” Environmental Design + Construction. Mar.-Apr. 2001: pages 45-50.

Feldman, Andrea. “Not Your Father’s Same Old Deal: General Motors Rolls Out New Strategic Model.” Office & Industrial Properties Sept. 1999: pages 28-30.

Dixson, Janice. “Archer’s Good Aim.” Engineering News-Record. 16 Nov. 1998: pages 28-30. (GM Renaissance Center)

“The Daniel F. and Ada L. Rice Children’s Center, Evanston, IL.” Brick in Architecture. Volume 54 Number 4: Summer 1997.

“Skidmore, Owings & Merrill LLP Awarded Design of Suzhou International Expo Center.” IAU Magazine.